

Memory Options

This section describes how to change the memory settings for the Java Virtual Machine when running Aspire. It depends on how you are running Aspire.

By default, Aspire uses 1 GB of memory for evaluation purposes. However, for production or development environments we recommend increasing this accordingly. Check the [Hardware and Network Considerations](#) for the recommend memory allocation settings.

On this page

- [Running in Linux from aspire.sh](#)
- [Running in Windows from aspire.bat](#)
- [Running as Windows Service](#)
 - [Option 1 - Re-install the Service](#)
 - [Option 2 - Change the JVM Options](#)

Running in Linux from aspire.sh

1. Go to your **\${aspire.home}/bin** folder and edit the **aspire.sh** file. In this case, we are setting Aspire to use 32 GB of memory.

```
# Set the java options
JAVA_OPT="$JAVA_OPT -Xmx32g -Xms32g -XX:MaxPermSize=256m"
```

2. Restart Aspire

```
$ bin\shutdown.sh
```

and then

```
$ bin\aspire.sh
```

Running in Windows from aspire.bat

1. Go to your **\${aspire.home}\bin** folder and edit the **aspire.bat** file. In this case we, are setting Aspire to use 32 GB of memory.

```
rem set the Java options for Aspire
set ASPIRE_JAVA_OPTS=-Xmx32g -Xms32g -XX:MaxPermSize=256m
```

2. Restart Aspire

```
> bin\shutdown.bat
```

and then

```
> bin\aspire.bat
```

Running as Windows Service

When running Aspire as a Windows Service, there are two options.

Option 1 - Re-install the Service

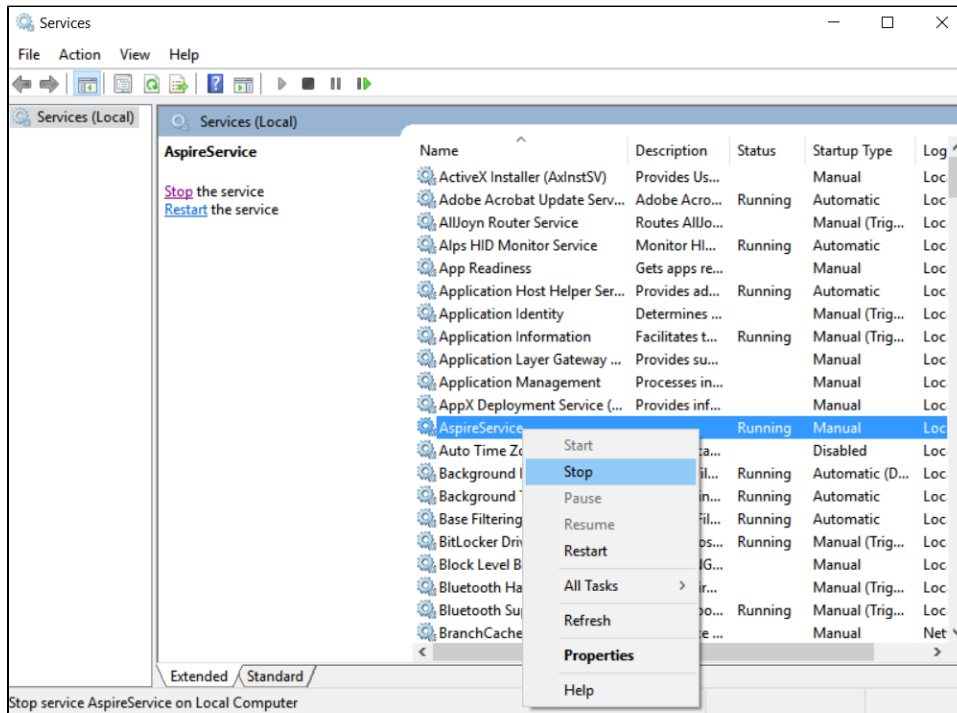
Every command should be run using an Administrator Console, and relative to the **\${aspire.home}** directory.

1. Change the `${aspire.home}\bin\installService.bat` file to reflect the memory settings you want to use. In the example below we are setting the memory as 32 GB.

```
rem Initial Java heap size
set JAVA_INITIAL_MEMORY=32768

rem Maximum Java heap size
set JAVA_MAX_MEMORY=32768
```

2. Stop the service from the Services window.



3. Remove the service by executing.

```
> bin\removeService.bat
Windows Service Name: AspireService

[SC] DeleteService SUCCESS
Service AspireService deleted.

>
```

4. Reinstall the service.

```
> bin\installService.bat
"JAVA 8"
Current System Architecture: AMD64
Windows Service Name: AspireService
Aspire Home: C:\Users\aaquilar\Distributions\aspire-4.0

Java VM: C:\Program Files\Java\jdk1.8.0_73\jre\bin\server\jvm.dll
Creating Service...

Service AspireService created.

>
```

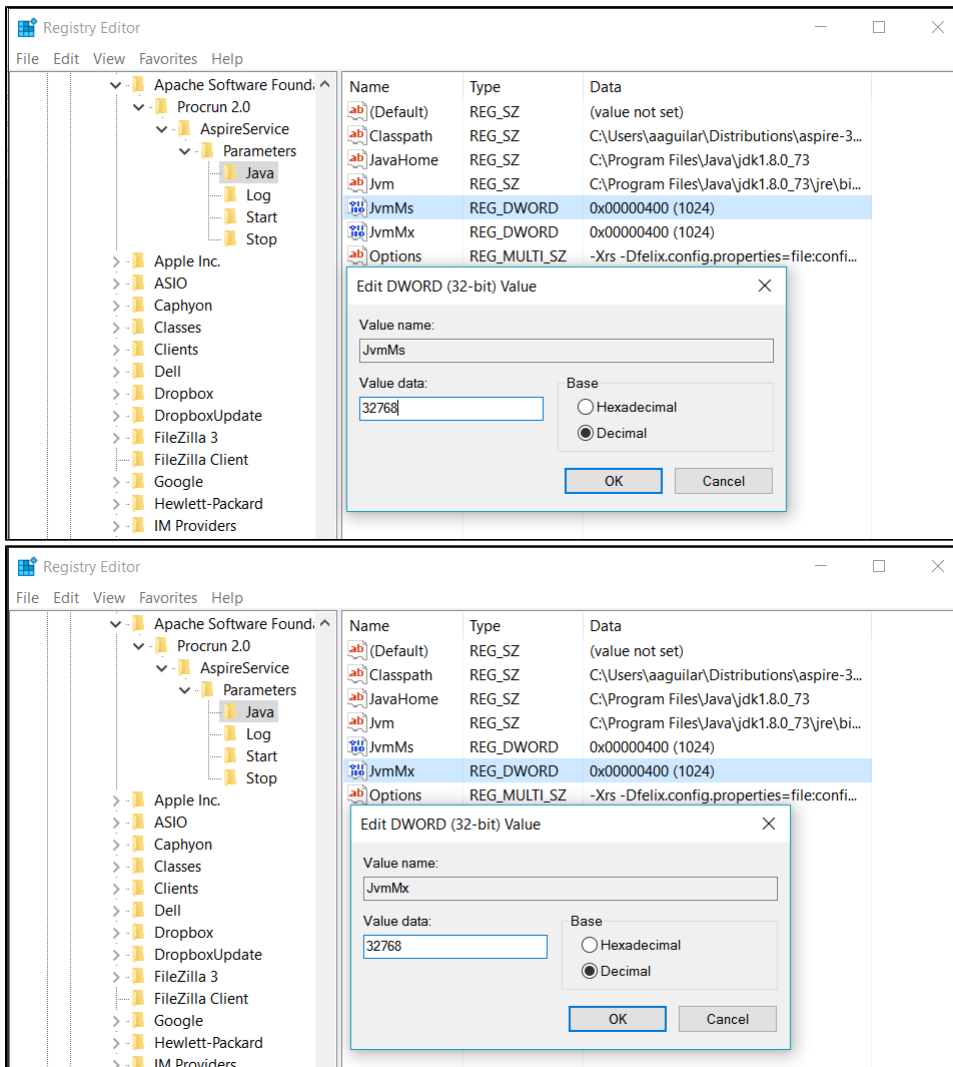
Option 2 - Change the JVM Options

This option is available if you can't or don't want to reinstall the Service.

1. Open the Registry Editor (regedit).
2. Browse to:

```
HKEY_LOCAL_MACHINE / SOFTWARE / WOW6432Node / Apache Software / Procrun 2.0 / AspireService / Parameters / Java
```

3. Edit **JvmMs** and **JvmMx** to what you need.



4. Restart the **AspireService** from the Services Window.

